



# The Bandung Food Policy: Promoting Urban Agriculture and Short Supply Chains

MUFPP Asia Pacific Webinar

13<sup>th</sup> April 2021

**Ir. Gin Gin Ginanjar, M.Eng.**

The Head of Food and Agriculture  
Departement City Government of  
Bandung

An aerial photograph of Bandung, West Java, showing a dense urban landscape with various buildings, including a prominent tall apartment complex on the left and a dark skyscraper in the center. The city extends to the horizon under a hazy sky.

*See you in Bandung*  
Where The Wonders of West java Begins



# Identifying Bandung Food Policy



**EXCELLENT, COMFORTABLE, PROSPEROUS, &  
RELIGIOUS".**



BY SIGNING THE MILAN URBAN FOOD POLICY PACT, AT 6<sup>th</sup> AUGUST 2020, WE WANT :

- GETTING INVOLVED IN GLOBAL CITY FOOD PROBLEMS;
- CONTRIBUTING TO SOLUTIONS.
- GIVING AN EXAMPLE HOW WE COMMIT TO OUR SEVEN COMMITMENT TO DEVELOP SUSTAINABLE FOOD SYSTEMS AND TO ENCOURAGE OTHER CITIES TO JOIN OUR FOOD POLICY ACTIONS IN THE FRAMING OF MILAN PACT.



QUOTE OF OUR FIRST PRESIDENT, MR. SOEKARNO:

“FOOD IS ABOUT THE LIFE AND DEATH OF A NATION. IF THE FOOD NEEDS OF THE PEOPLE ARE NOT FULFILLED, IT WILL BE CATASTROPHIC; THEREFORE, IT NEEDS MASSIVE, RADICAL, AND REVOLUTIONARY EFFORT”.

**Gathering** in Milano on the occasion of the Milan Expo *Feeding the Planet, Energy for Life*, we hereby state:

BY SIGNING THE MILAN URBAN FOOD POLICY PACT,  
WE, THE MAYORS AND REPRESENTATIVES OF LOCAL  
GOVERNMENTS, COMMIT TO THE FOLLOWING:

1. We will work to develop sustainable food systems that are inclusive, resilient, safe and diverse, that provide healthy and affordable food to all people in a human rights-based framework, that minimise waste and conserve biodiversity while adapting to and mitigating impacts of climate change;
2. We will encourage interdepartmental and cross-sector coordination at municipal and community levels, working to integrate urban food policy considerations into social, economic and environment policies, programmes and initiatives, such as, inter alia, food supply and distribution, social protection, nutrition, equity, food production, education, food safety and waste reduction;
3. We will seek coherence between municipal food-related policies and programmes and relevant subnational, national, regional and international policies and processes;
4. We will engage all sectors within the food system (including neighbouring authorities, technical and academic organizations, civil society, small scale producers, and the private sector) in the formulation, implementation and assessment of all food-related policies, programmes and initiatives;
5. We will review and amend existing urban policies, plans and regulations in order to encourage the establishment of equitable, resilient and sustainable food systems;
6. We will use the Framework for Action as a starting point for each city to address the development of their own urban food system and we will share developments with participating cities and our national governments and international agencies when appropriate;
7. We will encourage other cities to join our food policy actions.

Bandung, August 6<sup>th</sup> 2020

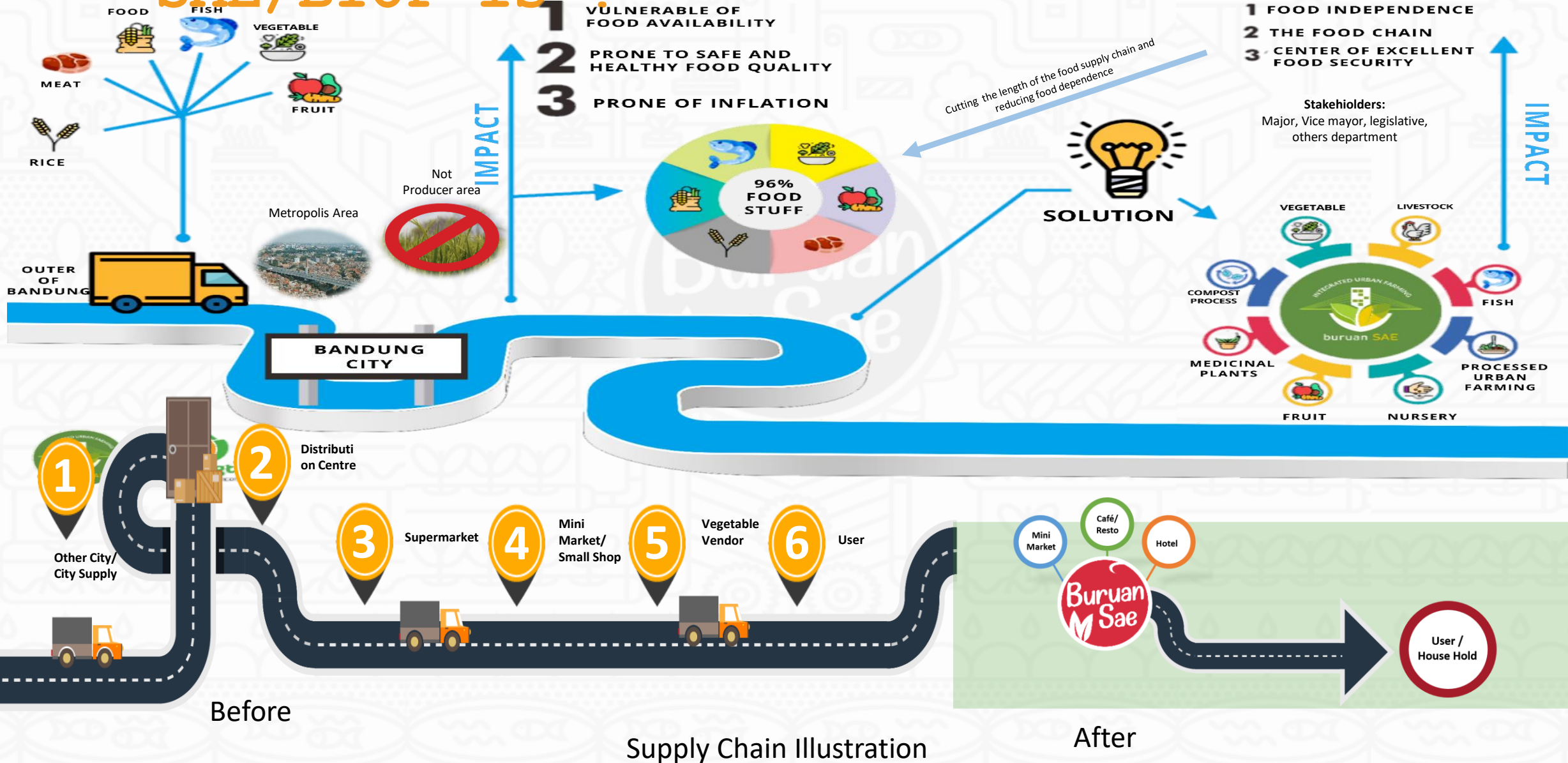
MAYOR OF BANDUNG



H/ ODED MOHAMAD DANIAL, S.A.P.

# Why Buruan SAE/BIUF is ?

visit [www.buruansae.bandung.go.id](http://www.buruansae.bandung.go.id)





# Implemented Buruan SAE/BIUF



Tipe of Homegarden/Unproductive Land













# Type of Roof Garden





# Type of Vertical Garden









# Sharing for Stunting





# Sharing for Stunting





# PERFORMANCE OF BURUAN SAE



## Input

2014 – 2018

- Kampung Berkebun (Urban Farming)

2019

- upgrading program to BURUAN SAE/BIUF

2020-2023

- Developing quantity and quality of Farmer Group
- City Resilience

PILOT PROJECT OF BURUAN SAE/BIUF

2

SEIN FARM

Laboratory

Training

Tourism

## Process

### 2 way adoption

*Top-down:*  
Municipality initiative

*Bottom-up:*  
Community Initiative  
(mentoring / training)

PILOT PROJECT OF BURUAN SAE/BIUF

1

PENDOPO (Mayor Pavilion's)

AGRICULTUREY

LIVESTOCK & FISHERIES

WASTE PROCESSING  
(Composting/Waste to food)



## Output

### DIRECT TARGET (FOOD)

### CITIZENS & COMMUNITY

**67 ACTIVE GROUPS TO 190.  
460 GROUPS IN 2023.**

24 kind of vegetables

24 kind of medical plants

8 kinds of Fruits

Chickens : Eggs

BUDIKDAMBER (Fish  
cultivation in the bucket) 3  
kind of fish

**8 METHODS FOR WASTE  
MANAGEMENT**

## Outcome

### Economic Perspective

- Independence in terms of food (Family Based)
- Reducing household Costs of food shopping
- Marketing of agricultural products via Bandung Agri Market (BAM)

### Environmental Perspective

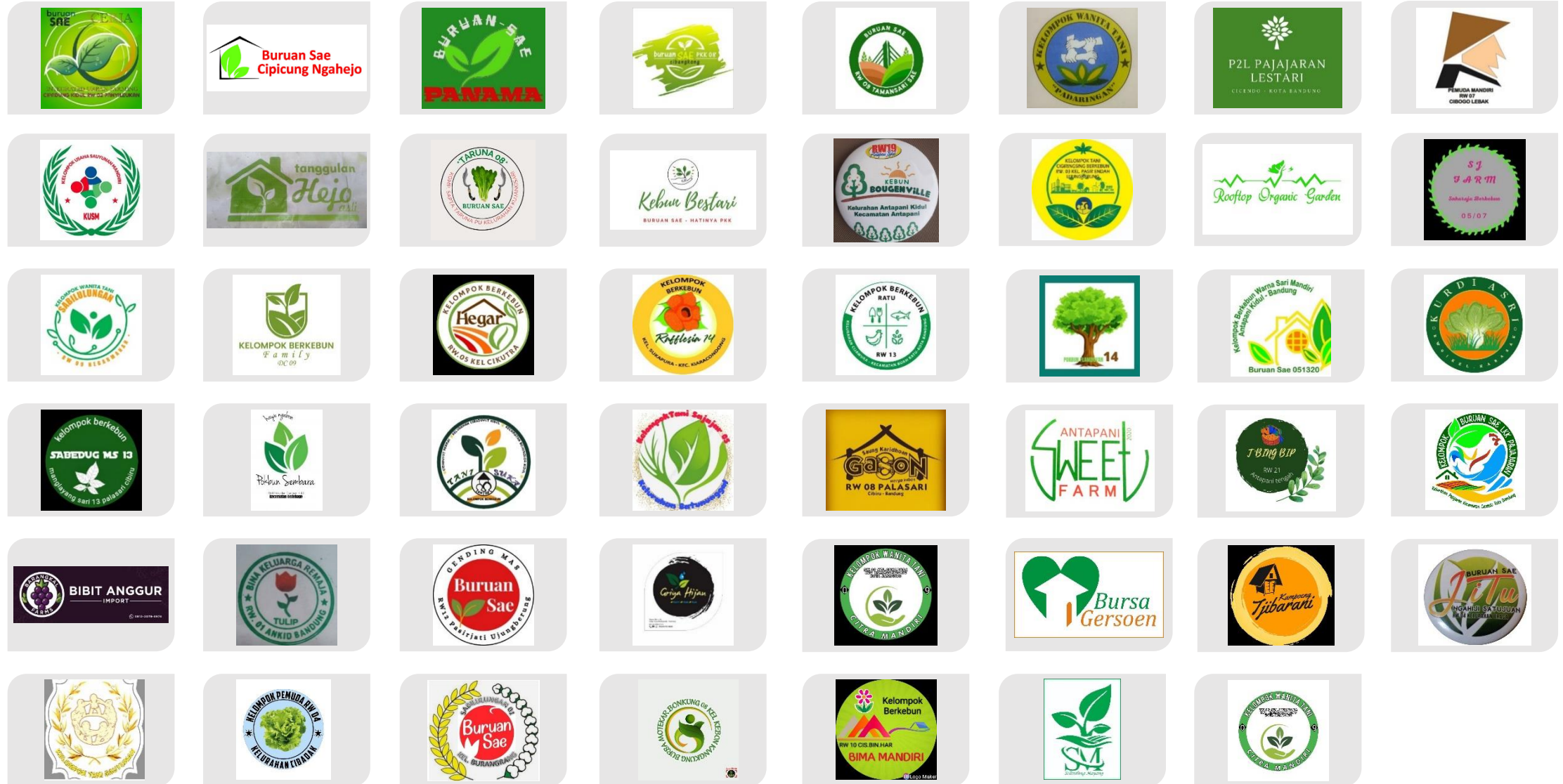
- Utilization of household waste through the KangPisMan movement (3R: Reduce, Reuse, and Recycle)
- Waste to Food (Processing of food waste into organic fertilizer)
- Productivity of underutilized land (unproductive land )

### Social Perspective

- Community education and empowerment
- Handling stunting (TANGINAS Stunting Response with Safe and Healthy Food)
- Food sharing: Food assistance for COVID patients who carry out self-isolation

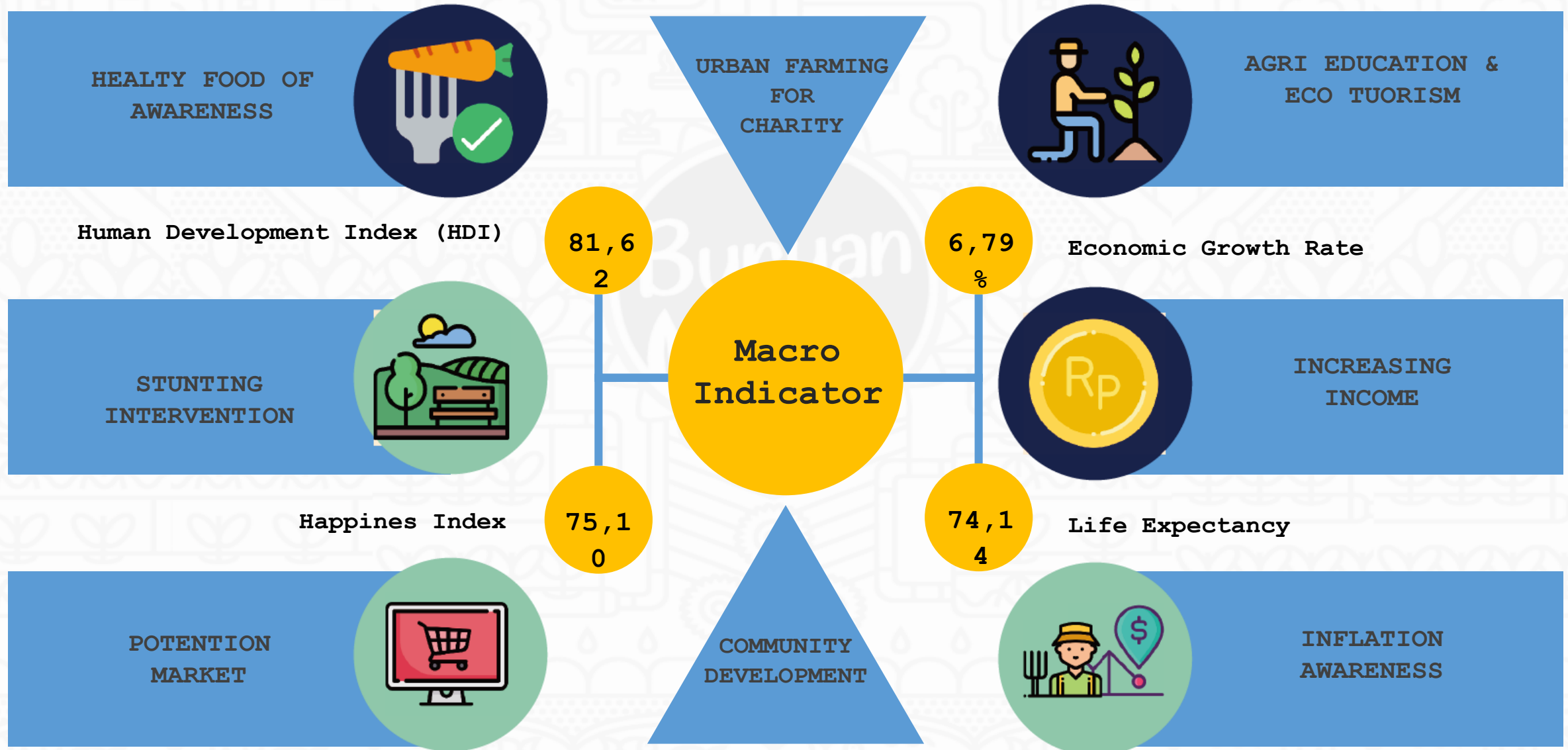


# Community of Buruan SAE



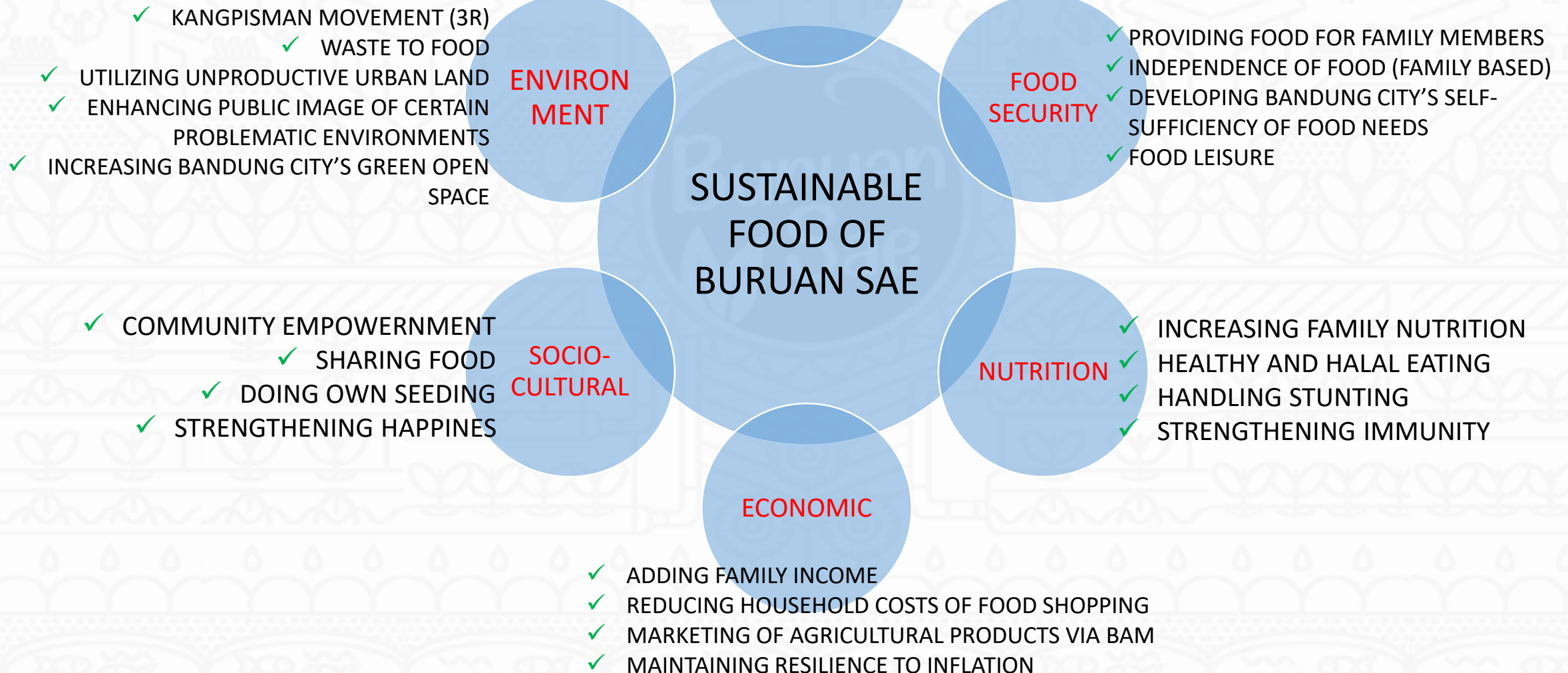


# IMPACT OF BURUAN SAE/BIUF





- ✓ DEFINED IN OUR PLANNING DOCUMENT
- ✓ DEVELOPING THE INNOVATIVE
- ✓ ECO-TOURISM
- ✓ GREEN EDUCATION
- ✓ COMMUNITY EDUCATION





# PUBLICATION AND EDUCATION VIA MEDIA



## In Picture: Urban Farming Buruan Sae di Bantaran Sungai Cikapundung

Rabu 24 Feb 2021 16:46 WIB

Rep: Cdi/Yusuf/ Red: Mohamad Amin Madani



<https://www.republika.co.id/>  
Februari 2021

## Program Buruan SAE: Tanam Sayuran di Halaman Rumah, Bantu Ekonomi Keluarga di Masa Pandemi

Selasa, 2 Maret 2021 19:09



Warga di lingkungan RW 14 dan 15 Kelurahan Pajareja, Ujungberung, Kota Bandung, membangun proyek Buruan SAE di lahan warga dengan Masjid Al Shiddiq, Kemis (20/1/2021).  
tribunjabar.id/Kulakero

<https://jabar.tribunnews.com/2021>





A man wearing a red vest, blue pants, and a straw hat sits cross-legged on a bamboo platform in front of a traditional thatched-roof hut at night. The scene is warmly lit by several glowing lights, including a large one in the foreground and smaller ones near the hut. The hut has a sign that says "LEUIT" above its entrance. To the left, there is a large tree trunk and some green foliage. In the background, there are some pots and a wooden pole.

*Thank You*  
Hatur Nuhun